



# CD8 (ABT304) Mouse mAb

<b>Catalog No</b>	YP-Ab-15651
<b>Isotype</b>	IgG
<b>Reactivity</b>	Human
<b>Applications</b>	IHC;WB;
<b>Gene Name</b>	CD8A MAL
<b>Protein Name</b>	alpha polypeptide (p32);CD_antigen=CD8a;CD8;CD8 antigen alpha polypeptide;CD8 antigen alpha polypeptide (p32);CD8 antigen, alpha polypeptide (p32);CD8a;CD8A antigen;CD8A molecule;CD8A_HUMAN;Leu2;Leu2
<b>Immunogen</b>	Synthesized peptide derived from human CD8
<b>Specificity</b>	The antibody can specifically recognize human CD8 protein, including two types of dimer: $\alpha\beta$ heterodimer or $\alpha\alpha$ homodimer.
<b>Formulation</b>	PBS, pH7.2, 0.03% Porcolin 300, containing stabilizing protein
<b>Source</b>	Monoclonal Mouse IgG2b, Kappa
<b>Purification</b>	The antibody was affinity-purified from mouse ascites by affinity-chromatography using specific immunogen.
<b>Dilution</b>	IHC-p 1:200-400, WB 1:200-1000,
<b>Concentration</b>	1 mg/ml
<b>Purity</b>	$\geq 90\%$
<b>Storage Stability</b>	-20°C/1 year
<b>Synonyms</b>	alpha polypeptide (p32);CD_antigen=CD8a;CD8;CD8 antigen alpha polypeptide;CD8 antigen alpha polypeptide (p32);CD8 antigen, alpha polypeptide (p32);CD8a;CD8A antigen;CD8A molecule;CD8A_HUMAN;Leu2;Leu2 T lymphocyte antigen;Ly 2;Ly 35;Ly B;Ly2;Ly3;Ly35;LyB;Lyt 2.1 lymphocyte differentiation antigen (AA at 100);LYT3;MAL;OKT8 T cell antigen;OTTHUMP00000160760;OTTHUMP00000160764;OTTHUMP00000203528;OTTHUMP00000203721;p32;T cell antigen Leu2;T cell co receptor;T lymphocyte differentiation antigen T8/Leu 2;T-cell surface glycoprotein CD8 alpha chain;T-cell surface glycoprotein Lyt 2;T-lymphocyte differentiation antigen T8/Leu-2;T8 T cell antigen;T8/Leu-2 T-lymphocyte differentiation antigen
<b>Observed Band</b>	
<b>Cell Pathway</b>	Membranous
<b>Tissue Specificity</b>	Tonsil/ Appendix
<b>Function</b>	disease:Defects in CD8A are a cause of familial CD8 deficiency (CD8 deficiency) [MIM:608957]. Familial CD8 deficiency is a novel autosomal recessive



immunologic defect characterized by absence of CD8+ cells, leading to recurrent bacterial infections.,function:Identifies cytotoxic/suppressor T-cells that interact with MHC class I bearing targets. CD8 is thought to play a role in the process of T-cell mediated killing. CD8 alpha chains binds to class I MHC molecules alpha-3 domains.,online information:CD8 entry,online information:CD8A mutation db,PTM:All of the five most carboxyl-terminal cysteines form inter-chain disulfide bonds in dimers and higher multimers, while the four N-terminal cysteines do not.,similarity:Contains 1 Ig-like V-type (immunoglobulin-like) domain.,subunit:In general heterodimer of an alpha and a beta chain linked by two disulfide bonds. Can also form homodimers. Sho

## Background

The CD8 antigen is a cell surface glycoprotein found on most cytotoxic T lymphocytes that mediates efficient cell-cell interactions within the immune system. The CD8 antigen acts as a coreceptor with the T-cell receptor on the T lymphocyte to recognize antigens displayed by an antigen presenting cell in the context of class I MHC molecules. The coreceptor functions as either a homodimer composed of two alpha chains or as a heterodimer composed of one alpha and one beta chain. Both alpha and beta chains share significant homology to immunoglobulin variable light chains. This gene encodes the CD8 alpha chain. Multiple transcript variants encoding different isoforms have been found for this gene. [provided by RefSeq, Nov 2011],

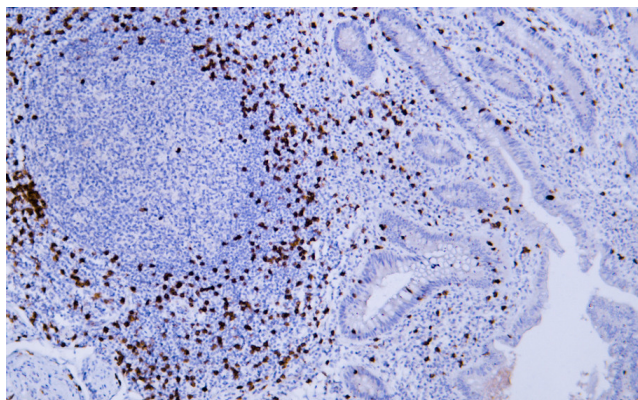
## matters needing attention

Avoid repeated freezing and thawing!

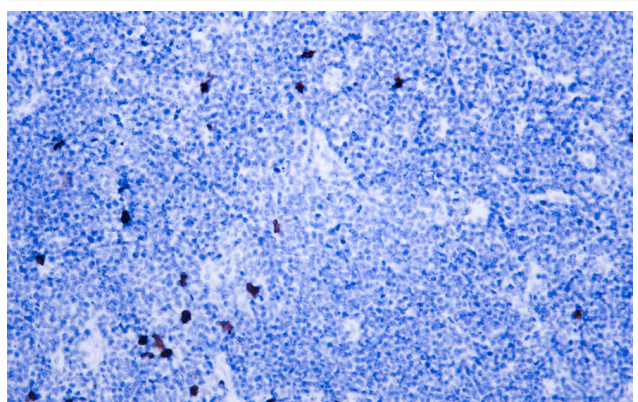
## Usage suggestions

This product can be used in immunological reaction related experiments. For more information, please consult technical personnel.

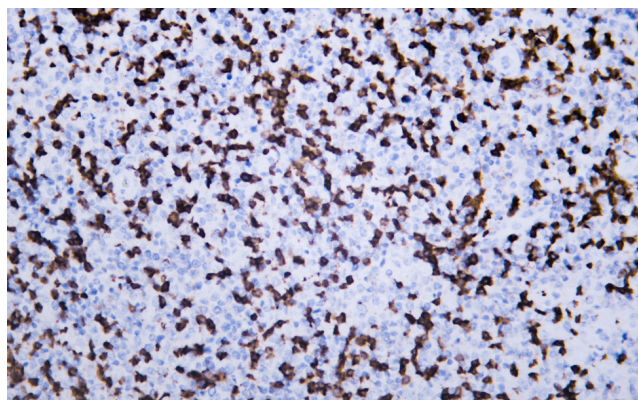
## Products Images



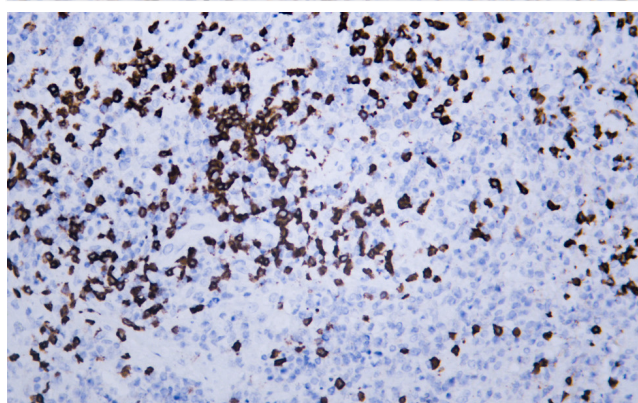
Human appendix tissue was stained with Anti-CD8 (ABT304) Antibody



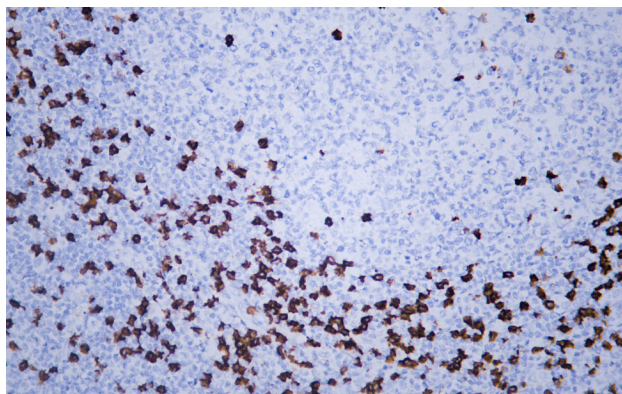
Human burkitt lymphoma tissue was stained with Anti-CD8 (ABT304) Antibody



Human lymphoma tissue was stained with Anti-CD8 (ABT304) Antibody



Human lymphoma tissue was stained with Anti-CD8 (ABT304) Antibody



Human tonsil tissue was stained with Anti-CD8 (ABT304) Antibody